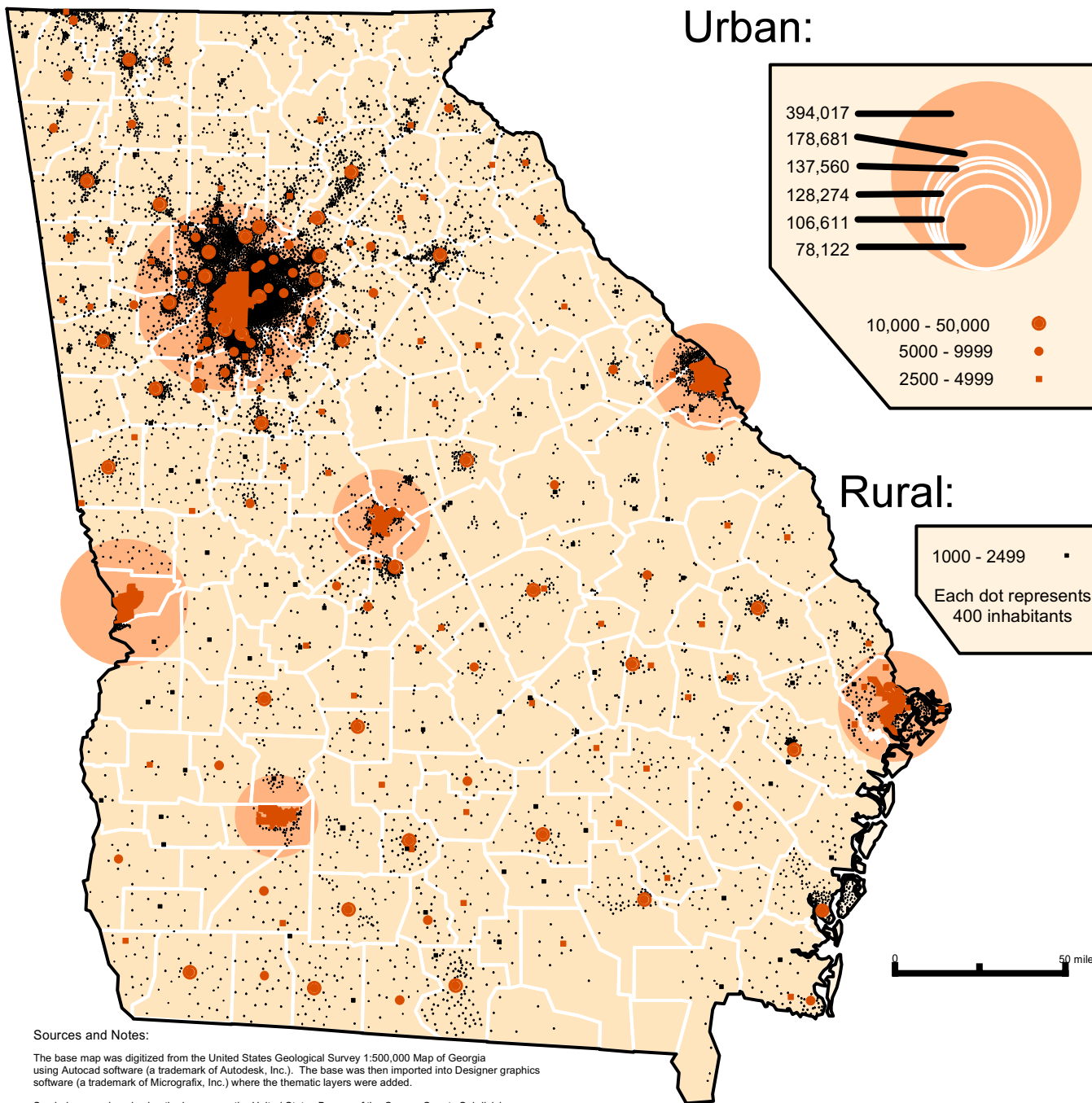


Georgia Population, 1990



Sources and Notes:

The base map was digitized from the United States Geological Survey 1:500,000 Map of Georgia using Autocad software (a trademark of Autodesk, Inc.). The base was then imported into Designer graphics software (a trademark of Micrografix, Inc.) where the thematic layers were added.

Symbols were placed using the base map, the United States Bureau of the Census County Subdivision Outline Map (1990) Georgia, and the Georgia Department of Transportation Official Highway and Transportation Map (Copyright 1993), for reference. The two reference maps were scanned with Photofinish (a trademark of ZSoft, Inc.), imported into Designer, and scaled as necessary. These reference maps were removed once the symbols were placed. The completed map was exported from Designer as an encapsulated postscript file and printed at a service bureau on a Megachrome printer (a trademark of ReproCAD, Inc.).

Population data were obtained from the United States Bureau of the Census Summary Population and Housing Characteristics, 1990.

Rural and Urban designations are based on U.S. Census definitions.

The number of rural dots for each Census County Subdivision was calculated by subtracting the population of any city(ies) or town(s) within the County Subdivision from the total County Subdivision population and then dividing the difference by 400.

Census Designated Places (CDP's) are represented by rural dots.

Cities and towns of 1000 persons or more are shown using appropriate symbols.

Proportional circles represent total population within incorporated city boundaries.

Cartography by:
 Leslie Edwards, Elaine Hallisey,
 Mary Spivey, and Michael Weinberg
 Georgia State University, Department of Geography, 1994